

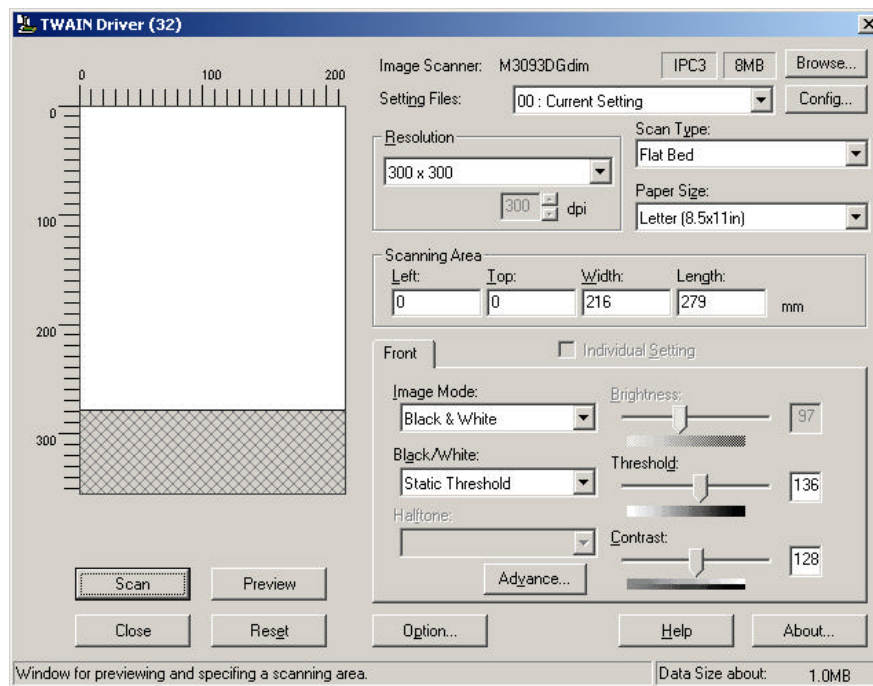
Multiple Page Flat Bed Scanning with Imaging



Imaging.Ink

Documents scanned in **Kodak Imaging** for later Ariel Use must be saved as TIFF (*.tif)

- ? Go to the **File** menu and click on **Acquire Image**.
- ? You will see the following box, (TWAIN Driver window):



- ? If you are using the Flat Bed check for the settings listed below:
 - o Image Mode: B/W
 - o Paper size: Letter or Legal depending on the paper source
 - o Resolution: 300 dpi

- Brightness & Contrast: 128
- Scan Type: Flat Bed
- ? After checking these settings click **Scan**. The page will be scanned and the TWAIN Driver window will close.
- ? To add additional pages position the new page to be scanned, go to the **File** menu, highlight **Append**, and then click on **Acquire Image**.
- ? At this point you will see the TWAIN Driver window again. Click **Scan** in the new TWAIN Driver window.
- ? A new page will be scanned and added to the end of your file.
- ? Repeat as necessary.
- ? When the scanning is done please refer to the **Using Kodak Imaging For Ariel Use** instructions for editing, saving and finally importing the files from Imaging into Ariel.