

# Libraries Toolbar

The Libraries Toolbar is a Firefox extension (or add-on) that places a Rutgers University Libraries toolbar in your browser.

It offers:

- Quick access to the libraries resources
- Visual cues to the Libraries holdings of books offered on popular bookseller web sites
- New options in the “right-click menu” of your browser
- Automatic linking of ISBNs, ISSNs, PubMed IDs and DOIs to Rutgers licensed electronic resources
- And much more ...

## Download the Libraries Toolbar Now

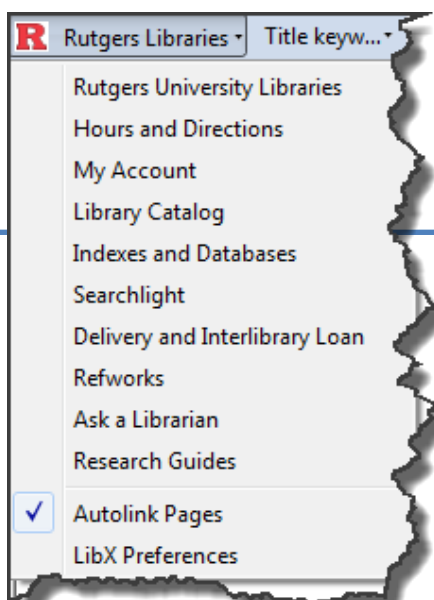
To learn more about the free downloadable Toolbar, and to place a Rutgers Libraries Toolbar on your web browser, please see:

<http://www.libraries.rutgers.edu/rul/tools/toolbar/toolbar.shtml>

The link can also be found on the Libraries’ webpage under Research Resources.

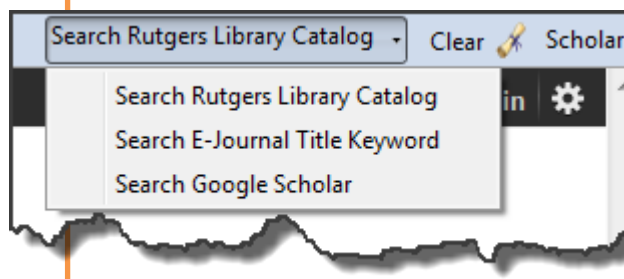
### 1 Instant access to library resources

The toolbar drop-down menu provides instant access to Library resources and services without having to start at the Libraries’ webpage. This information will open in a new browser tab.



### 2 Search Box

The search box provides one-step searching in the Rutgers University Library Catalog, the e-journal list or Google Scholar. It eliminates the need to start the search from the Library web page.

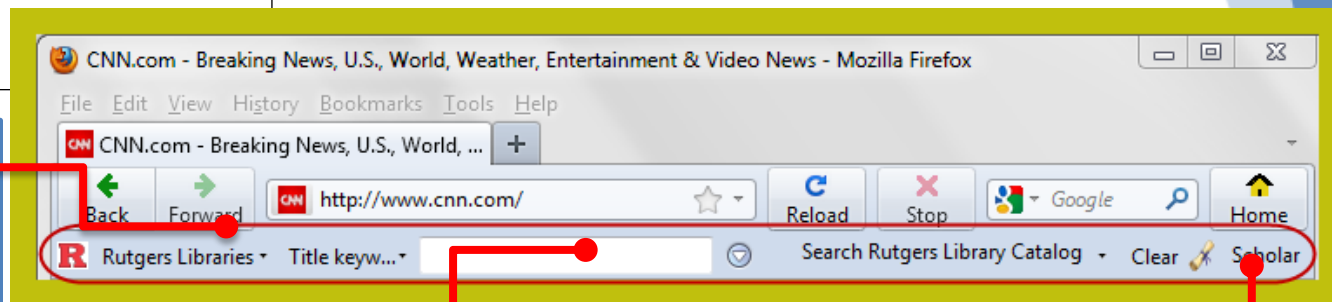


### 3 Magic “Scholar” button

Highlight article citation information anywhere and “drag and drop it” to the “Scholar” button for quick access to Rutgers University Libraries holdings. Note: if the citation information is for a book, highlight the title and right-click to search the Catalog.

If the article is not found at Rutgers, a Google Scholar page will pop up, asking for additional information.

If the article is available through “Scholar” button and you are working remotely, you will need to use the right-click searching) to reload the Rutgers page so that the login page will appear. Use your Rutgers NetID to login and gain access to the full-text.

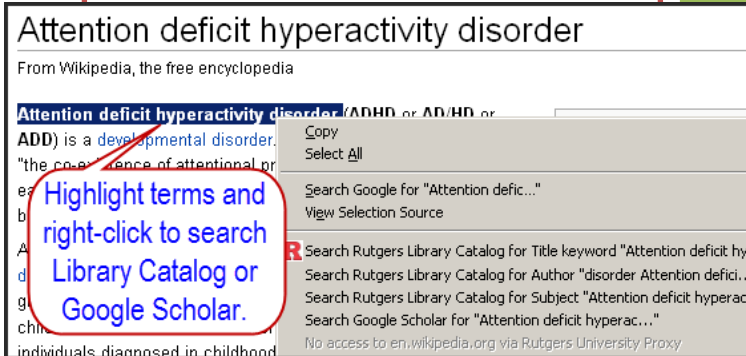


## Other features of Rutgers Libraries Toolbar:

(<http://www.libraries.rutgers.edu/rul/tools/toolbar/toolbar.shtml>)

### 4 Right-click searching

Highlight terms on any web page and right-click to use features such as search Rutgers Library Catalog or search Google Scholar.



If you have questions or comments about the Rutgers Libraries Toolbar, please send an email to:  
[RUL\\_toolbar@email.rutgers.edu](mailto:RUL_toolbar@email.rutgers.edu)

### 5 Visual Cues

When you find the visual cue **R** on certain web pages, such as Amazon, Barnes & Noble and AbeBooks, selecting the symbol **R** will take you to the Libraries' catalog to let you know if Rutgers owns the item.

For the latest information on this and other library services, visit the Libraries' website at <http://www.libraries.rutgers.edu>

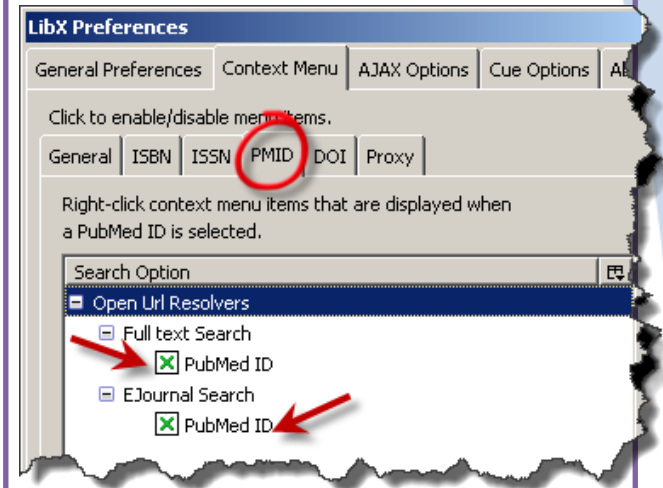


Rutgers, The State University of New Jersey  
169 College Avenue  
New Brunswick, NJ 08901-1163

### 6 PubMed full-text

Autolinking to Rutgers University subscribed articles in PubMed is available using the Toolbar on-campus or to Rutgers faculty, students and staff working remotely.

To "autolink" to a full-text article from PubMed, be sure to go to the LibX preferences in the drop-down menu. In the preferences box, select "Context Menu", then "PMID" before finally checking the box next to PubMed ID.



The autolink feature recognizes a PMID (PubMed ID). In PubMed, click on the PMID number and it will take you to a Rutgers page which tells you if Rutgers has the article and the available format. If you are working remotely, you will need to use the right-click feature to reload the same page so that the login prompt for Rutgers NetID will appear.