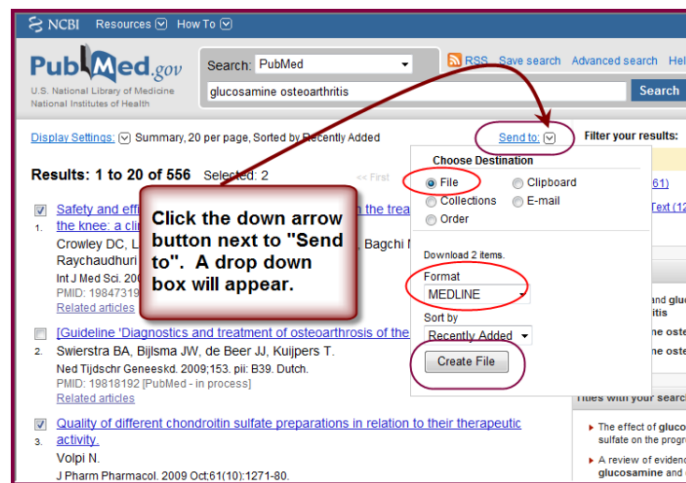
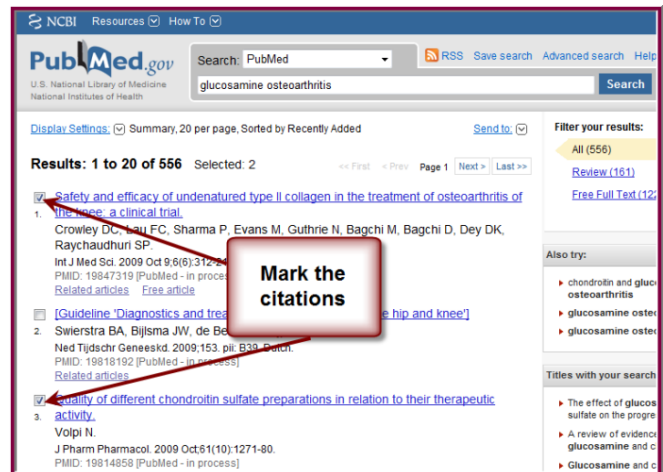


RefWorks, a citation manager, allows you to import citations from the PubMed database.

1

After performing a search in PubMed, mark the citations you wish to export.

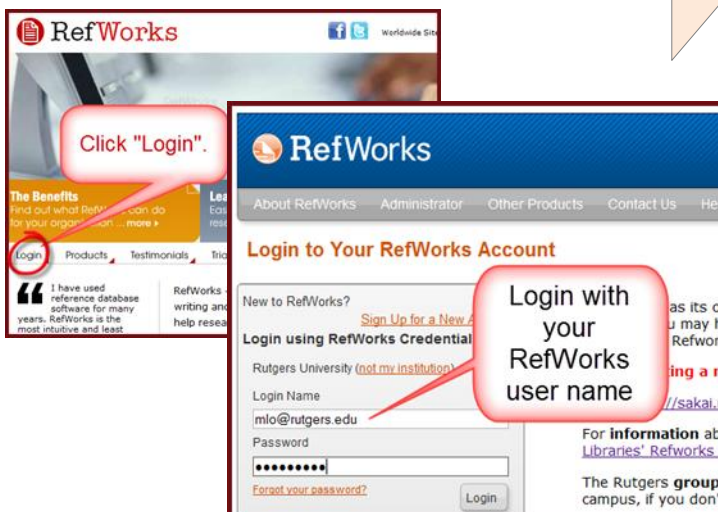


2

From the "Send to" drop-down, select "File", then "MEDLINE" from the Format menu. Click on "Create File".

3

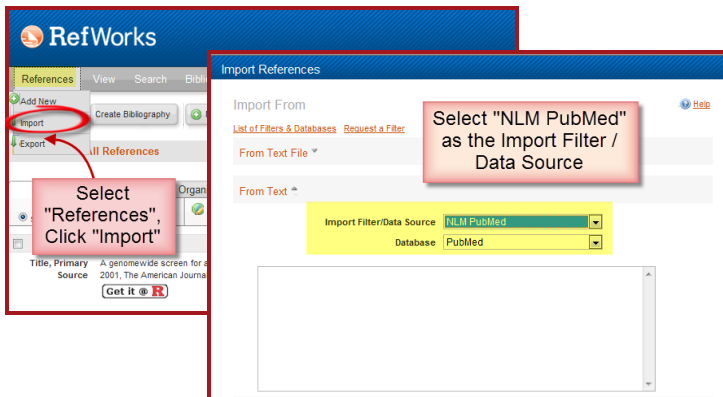
Open the document in Notepad or a similar program.



4

Login to RefWorks from the login center. You can also go directly to [this web site](https://www-refworks-com.proxy.libraries.rutgers.edu) - <https://www-refworks-com.proxy.libraries.rutgers.edu>

If you are working remotely and have not logged in on the Rutgers Libraries web page, please do so before connecting to RefWorks.



5

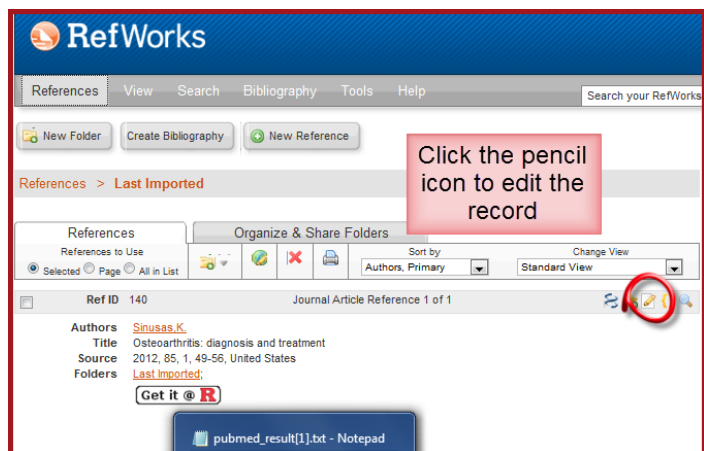
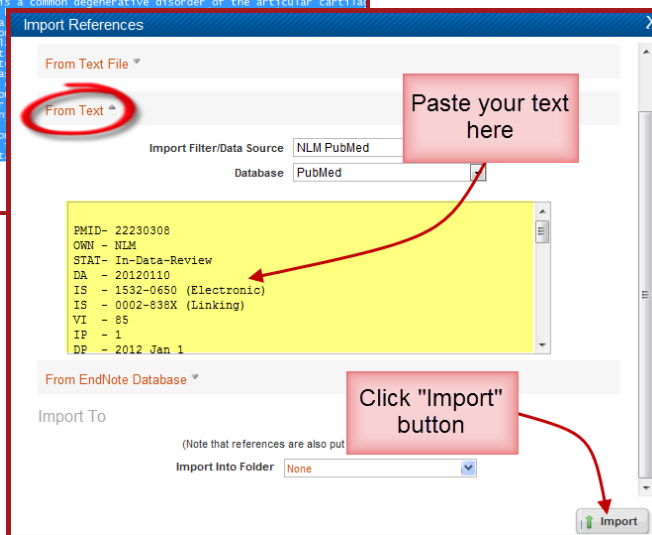
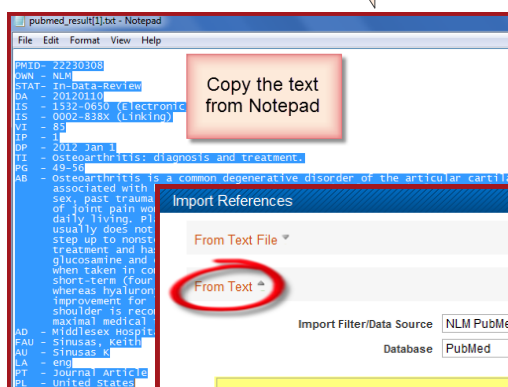
Select "References" from the top menu, then "Import" from the drop-down list.

Select "NLM PubMed" as the Import filter/Data Source and "PubMed" as the database.

6

Copy and paste the information from Notepad into the box, "Import data from the following text".

Click "Import" button to transfer your references.



7

A message indicating that "Import completed" will appear and your records should be in the last imported folder unless you selected a specific folder for import. Remember to move records in the last imported folder into another folder before importing more records.

If you are not sure how to move records or need help with other features, please view the Refworks videos at <http://www.refworks.com/tutorial/> or contact a librarian at Rutgers University.