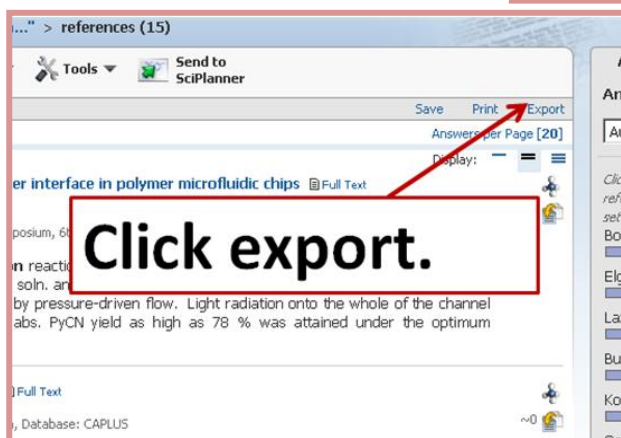
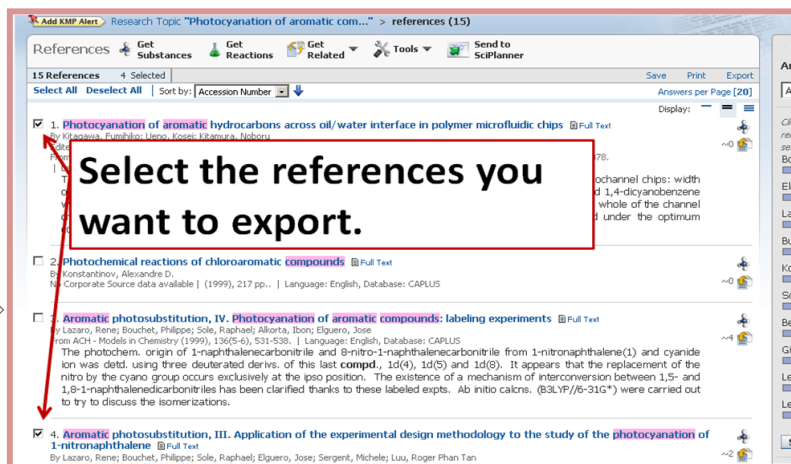


RefWorks, a bibliography manager, allows you to import references from the SciFinder database.

1

After performing a search in SciFinder, mark the references you wish to export.

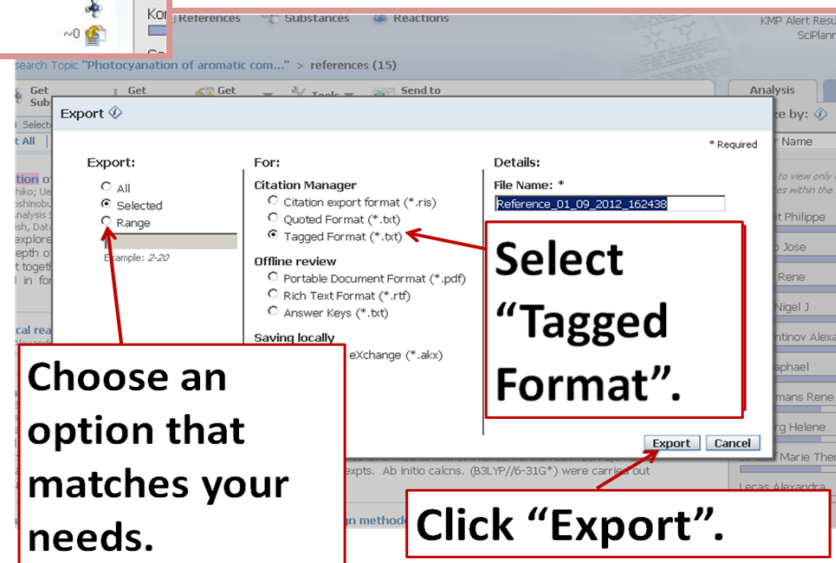


2

Click on "Export".
A dialog window will open.

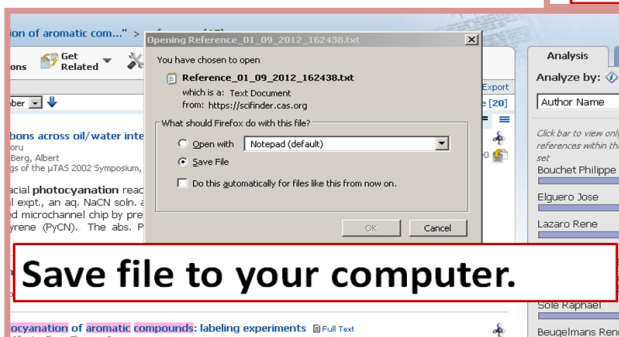
3

Choose an option for the set of references to be exported. Select "Tagged Format". You can rename the file so it's easy to remember; you can also use the default name.



4

Save the file to your computer.
Choose a location where you can find it easily later.



5

Log-in to your RefWorks account. If you are working remotely, login on the Rutgers Libraries webpage first.

To login to RefWorks from off campus, login on the Rutgers Libraries webpage first.

Click "References" and then click "Import".

Select "CAS SciFinder" as Import Filter.

6

Select "References" from the top menu, then "Import" from the drop-down list.

Select "CAS SciFinder" as the import filter/data source.

Select the appropriate databases used in your search. If you used both CAPlus and Medline, select "Multiple Databases"

Select the appropriate databases used in your search. If you used both CAPlus and Medline, select "Multiple Databases"

7

Locate the .txt file you just saved to your computer and then click on "Import".

A message indicating that "Import completed" will appear and your records should be in the last imported folder unless you selected a specific folder for import. Remember to move records in the last imported folder into another folder before importing more records.

Browse to locate the file you just saved to your computer.

Click "Import".

If you are not sure how to move records or need help with other features, please view the Refworks videos at <http://www.refworks.com/tutorial/> or contact a librarian at Rutgers University.